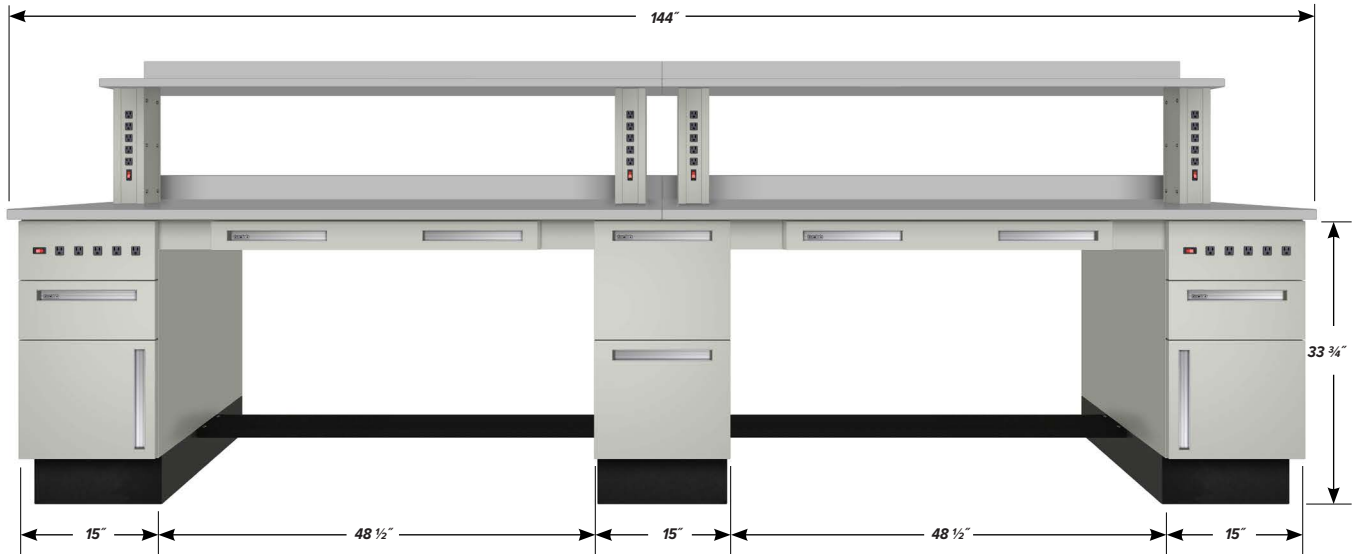


12' WORKBENCH TWS-3700

Teclab workbenches share common design features that have earned for Teclab the reputation in the industry as the "professional's bench." Typical features include an abundance of grounded outlets within easy reach; an infinite variety of drawer and door combinations to meet every job and storage requirement; expansive work surfaces, shelves, and back guards in a choice of task-oriented materials.



FEATURES

One **C-1518-EP-1** one drawer, one door, 15" wide Base Cabinet with 5 grounded outlets, plus combination circuit breaker rocker switch.

One **C-1509** two drawer, 15" wide Base Cabinet

One **C-1519-EP-1** one drawer, one door, 15" wide Base Cabinet with 5 grounded outlets, plus combination circuit breaker rocker switch.

Two **FR6-48.5** 48.5" Foot Rests

Two **APD-3600** 36" wide Apron Drawers

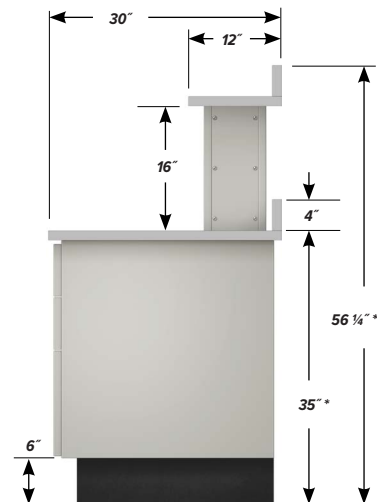
Four **AF-06.25** 6.25" Apron Fillers

Four **SS-16-EP-1** 16" tall Shelf Supports with 5 grounded outlets, plus illuminated combination rocker switch

Two **TP1-3072-PVC** 30" x 72" x 1 1/4" plastic laminate Work Surfaces

Two **SP1-1272-PVC** 12" x 72" x 1 1/4" Shelves of same material

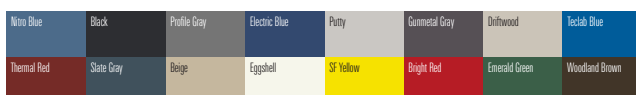
Four **BGP-72-PVC** 4" x 72" x 1 1/4" Back Guards of same material



* HEIGHT SHOWN IS BASED ON A 1 1/4" THICK WORK SURFACE. OVERALL HEIGHT VARIES DEPENDING ON THICKNESS.

FINISH OPTIONS

Powder coated steel components.



Custom paint color matching is available. Stainless Steel is also available.

WORK SURFACE COLOR OPTIONS

Visual comparison. Color choices vary depending on work surface type.

