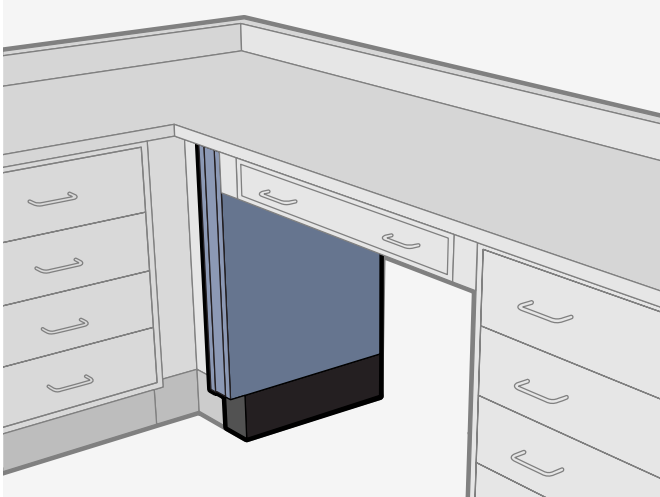


PANEL & SUPPORT LEGS

Panel Legs are available in two heights to correspond with the two available heights of standard Base Cabinets. These Panel Legs are constructed of heavy-gauge, steel assembly, with easily removable side panels. Each is provided with knockouts in the back frame and punch outs in the top to allow for flexibility during installation. Each Panel Leg is finished in the same manner as the Base Cabinet.

Support Legs (not shown), lack the toe-kick area and are used to hold up work surfaces which require added support.



Panel Legs

Panel Leg **WPL-15** (Bench Height (35 1/2" high x 4" wide x 22" deep)

Panel Leg **WPL-10** (27 3/4" high x 4" wide x 22" deep)

Support Leg **WLEG-15** (Bench Height (35 1/2" high x 4" wide x 8" deep)

Support Leg **WLEG-10** (27 3/4" high x 4" wide x 8" deep)

Panel Legs with Electrical Power Kit

EP Panel Legs come standard with Electrical Power Kit EP-1. Many other EP kits are available as well as data connectors. We can also customize the kits by adding USB charging ports, emergency power etc.

WPL-15-EP (Bench Height (35 1/2" high x 4" wide x 22" deep)

WPL-10-EP (27 3/4" high x 4" wide x 22" deep)

Power Cord Routing:

EP kits come with a 9' Power Cord which can be routed through knockouts on the sides and rear of the Panel Leg. Holes in the top can also be used to route cords, though drilling through work-surfaces is required.

Knockouts are standard size and allow easy connection to electrical conduit fittings.

