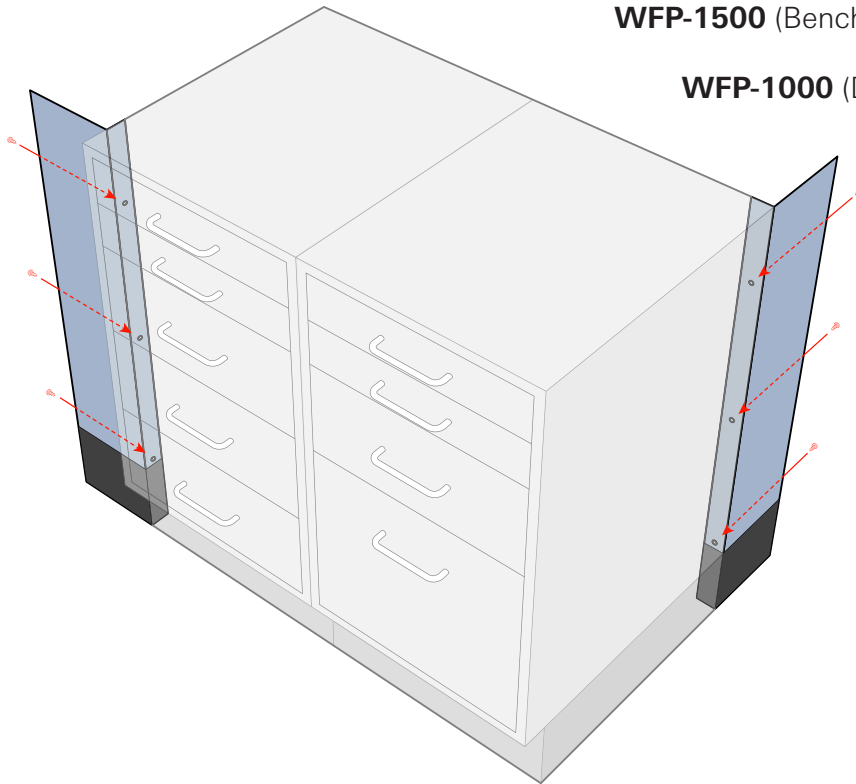


FILLER PANELS

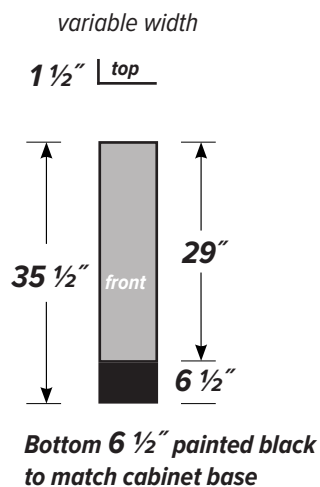
Filler Panels are available in two heights* to correspond with the two available heights of standard Base Cabinets and provide a smooth filler between the cabinet and wall. Each Filler Panel is finished in the same manner as the Base Cabinets. Filler Panels come in **Right** and **Left** variants.

WFP-1500 (Bench Height, 35 1/2" high x variable width)

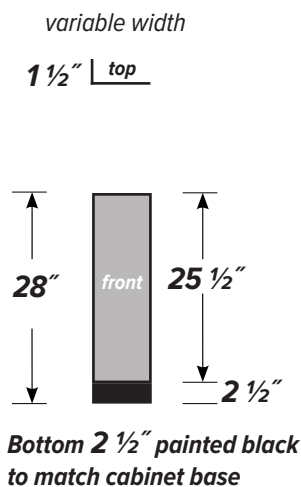
WFP-1000 (Desk Height, 28" high x variable width)



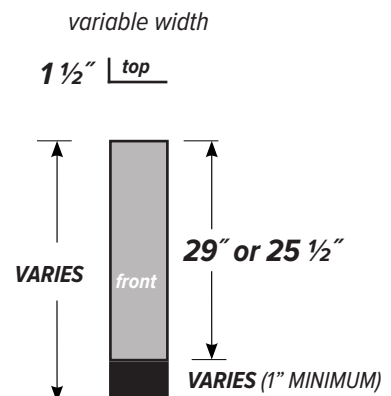
STANDARD BENCH-HIGH (WFP-15) Dimensions



STANDARD DESK-HIGH (WFP-10) Dimensions



*SPECIAL (WFP-SP) Dimensions



Bottom painted black to match special cabinet base

COMMON "SPECIAL" HEIGHT PARTS ARE ADA OR STANDING HEIGHT, BUT CAN BE ANY HEIGHT.

THE BASE HEIGHT WILL BE ADJUSTED, BUT THE CABINET SHELL HEIGHT WILL REMAIN FIXED AT EITHER 29"h or 25.5"h.