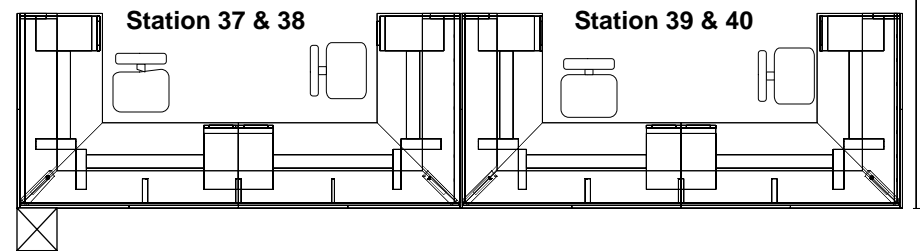
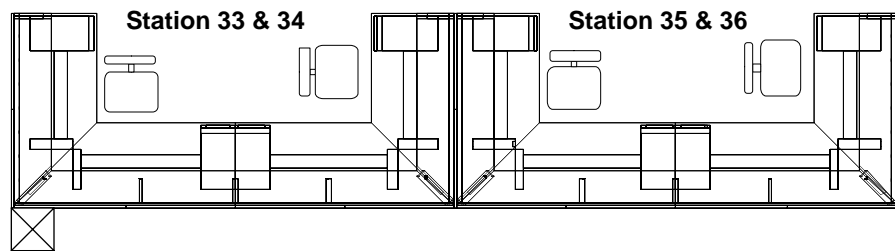
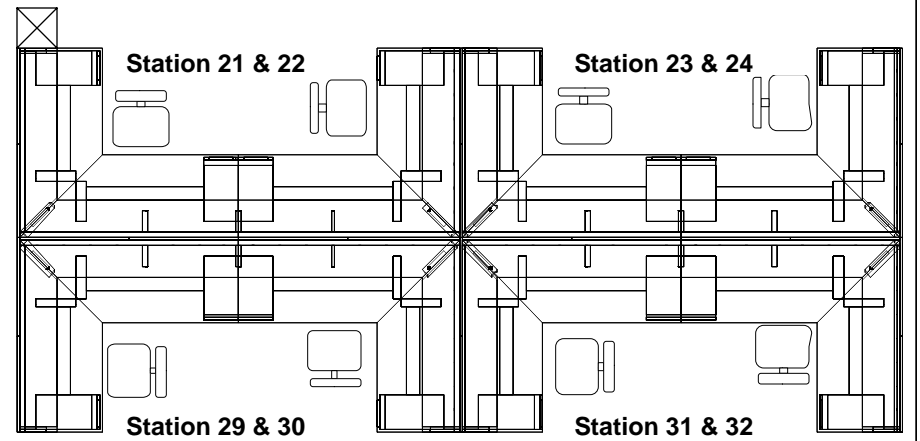
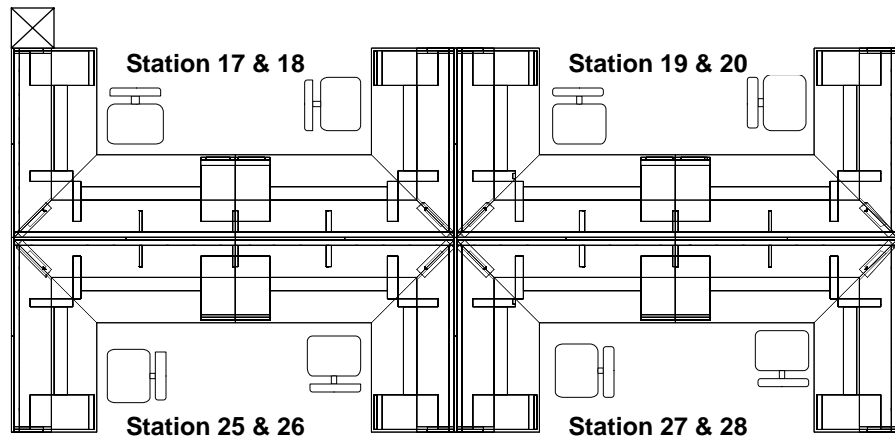
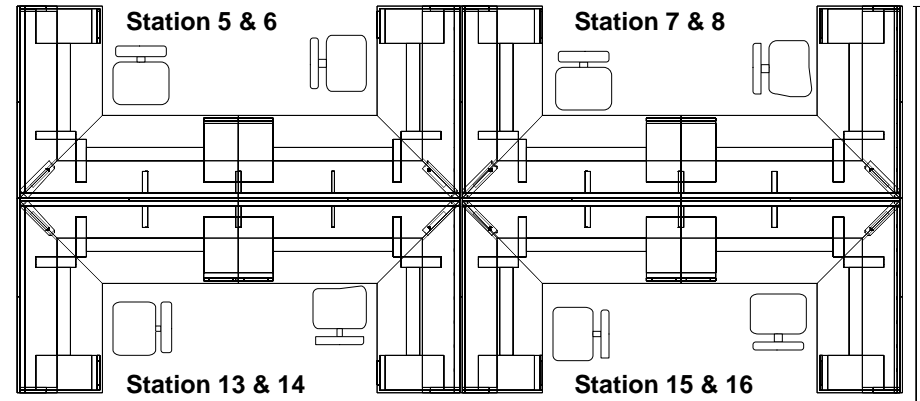
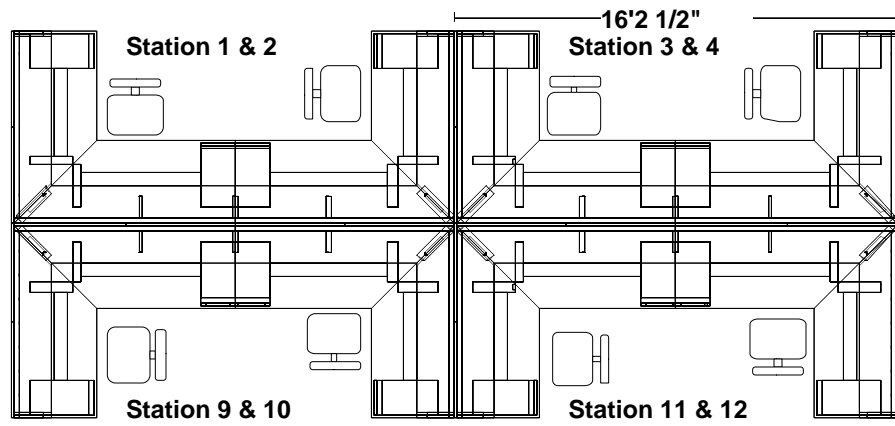
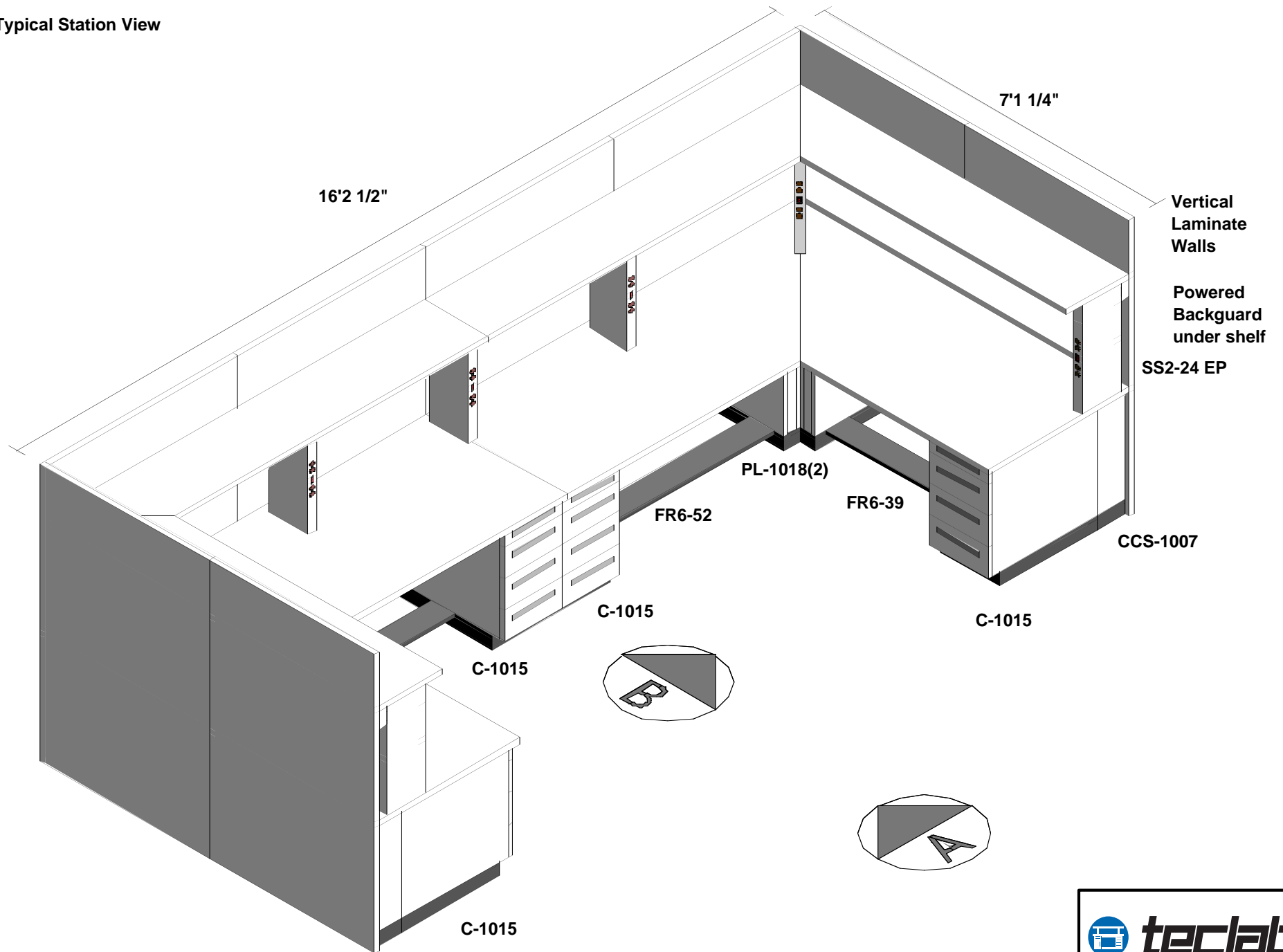


68'7 1/2"



43'3 3/4"

Typical Station View

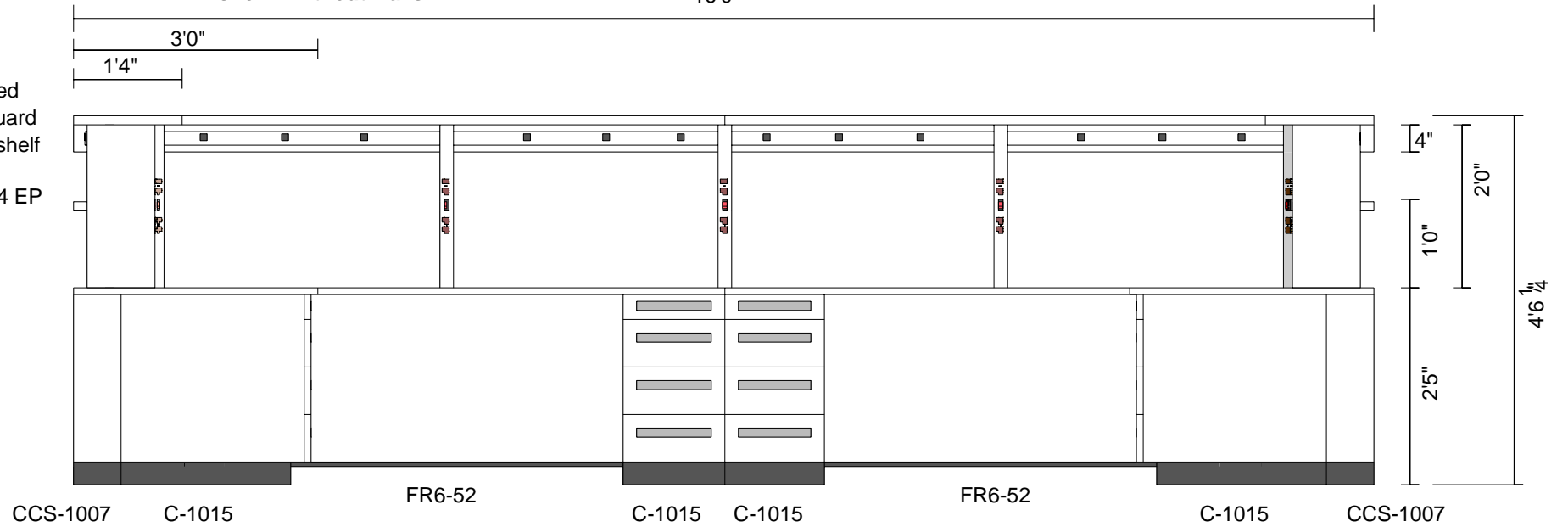


# Elevation A

shown without walls

16'0"

Powered  
Backguard  
under shelf  
  
SS2-24 EP



# Elevation B

shown without walls

7'1 1/4"

Powered  
Backguard  
under shelf  
  
SS2-24 EP

PL-1018(2)

